

ATX-1140F



Features

ATX12V Rev. 1.3 & ATX Backward Compliant
SATA HDD power connector built-in
High Efficiency
Power good TTL Signal, Remote On/Off
Short Circuit, Over Current & Voltage Protection

Safety Compliant
IAPC, Wake-On-LAN Technology Ready
Auto-Sensing Thermal Control
Low Acoustic Noise

Specifications

Applies for

All Intel Processors up to P4-HT
All AMD Processors up to Athlon 64/FX

Electrical Specifications

Input Voltage	115 ~ 230 VAC
	Manual Select
Frequency	50 ~ 60 Hz
Input Current	8.0 Arms @ 115 VAC 4.5 Arms @ 230 VAC
Holdup Time	> 14 ms @ Full Load

Environmental Specifications

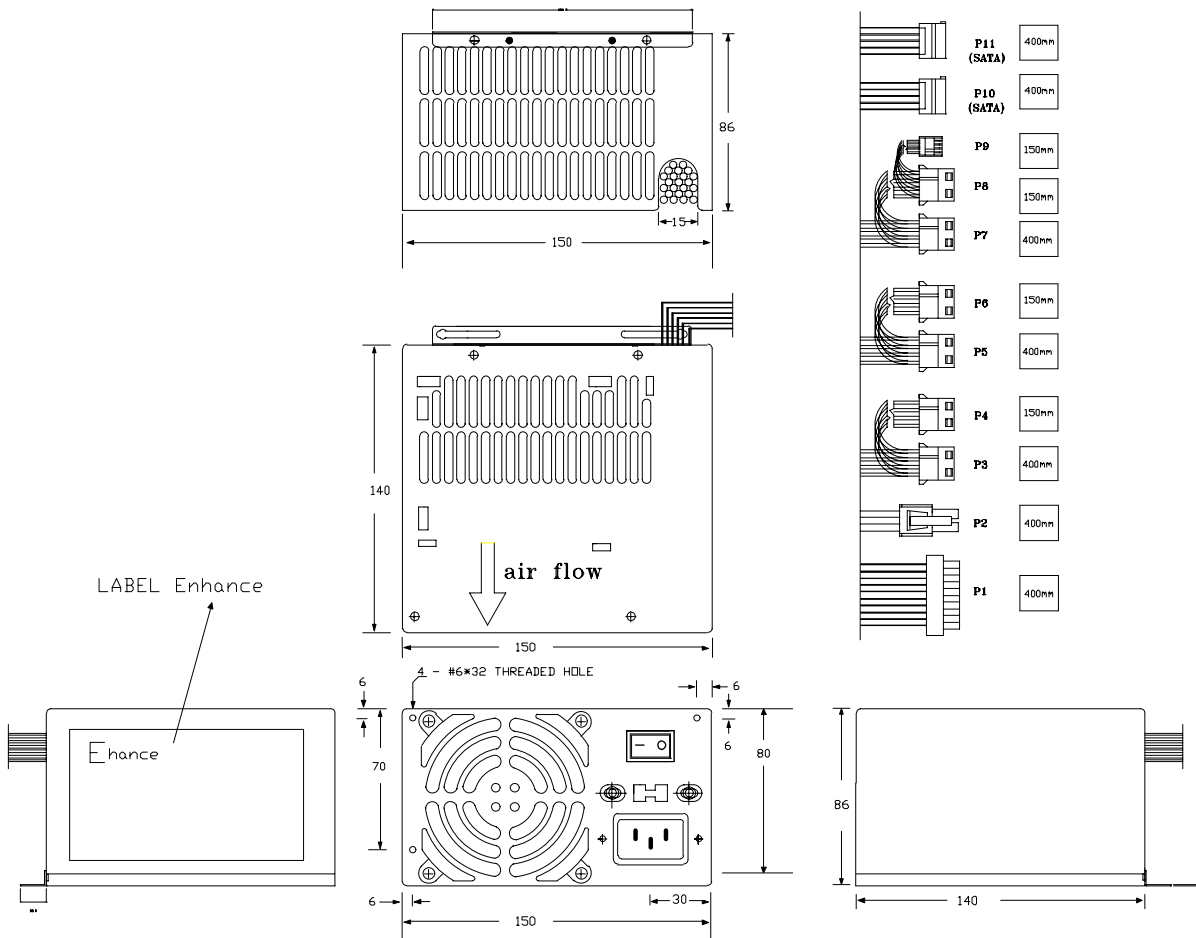
Operating/Storage Temp.	10~50°C/-20~60°C
Operating/Storage Humidity	85% / 95%
Operating/Storage Altitude	10,000/50,000 FT
MTBF	100,000 HRS
Safety Approvals	UL/CUL, CB, TUV

EMC Regulations FCC, CE

Output Specifications

Voltage	Regulation Load	Minimum Load	Maximum Load	Peak
+3.3V	+/- 5%	0.3A	28.0A	--
+5.0V	+/- 5%	0.1A	38.0A	--
+12.0V	+/- 5%	1.0A	18.0A	20.0A
-12.0V	+/- 10%	0A	0.8A	--
+5 Vsb	+/- 5%	0A	2.0A	--

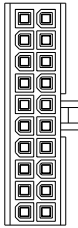
(*) Total maximum combines load output on +3.3V and +5V rails should not exceed 240 Watts.



Wire Harness

Description

P1 - Main Power

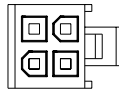


Connector Housing

Molex 39-01-2200 or Equivalent

1	Orange	+3.3V	11	Orange	+3.3V
2	Orange	+3.3V	12	Blue	-12VDC
3	Black	GND	13	Black	GND
4	Red	+5V	14	Green	PS_ON
5	Black	GND	15	Black	GND
6	Red	+5V	16	Black	GND
7	Black	GND	17	Black	GND
8	Gray	PWR OK	18	NC	Reserved
9	Purple	5 VSB	19	Red	+5V
10	Yellow	+12V	20	Red	+5V

P2 – 4 Pin Processor Power



Molex 39-01-2040 or Equivalent

1	Black	GND	3	Yellow	+12V
2	Black	GND	4	Yellow	+12V

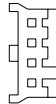
P3 to P8 – Peripheral



Molex 8981-04P or Equivalent

1	Yellow	+12V
2	Black	GND
3	Black	GND
4	Red	+5V

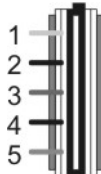
P9 – Floppy



AMP 171822-4 or Equivalent

1	Red	+5V
2	Black	GND
3	Black	GND
4	Yellow	+12V

P10 and P11 – Serial ATA



Molex 88751 or Equivalent

1	Yellow	+12V
2	Black	GND
3	Red	+5V
4	Black	GND
5	Orange	+3.3V